

2002/213
2
92/083

2006/282
51486
95/217

98/072

95/012 (V. van Samra)
51288
95/057 (W. van Samra)
51316
94/121 (M. van Samra)

93/141

76/0470

79/100
+ beb

beb
207/801
- 30 fange

beb

beb

42
beb

47
beb

48
beb

49
beb

50
beb

51
beb

52
beb

92/109
43
beb

79/203

71/076

81/025

2007/128
96/237 (W. van Samra)
beb 56
80/070

93/013
PARTSA
93/046
1/97

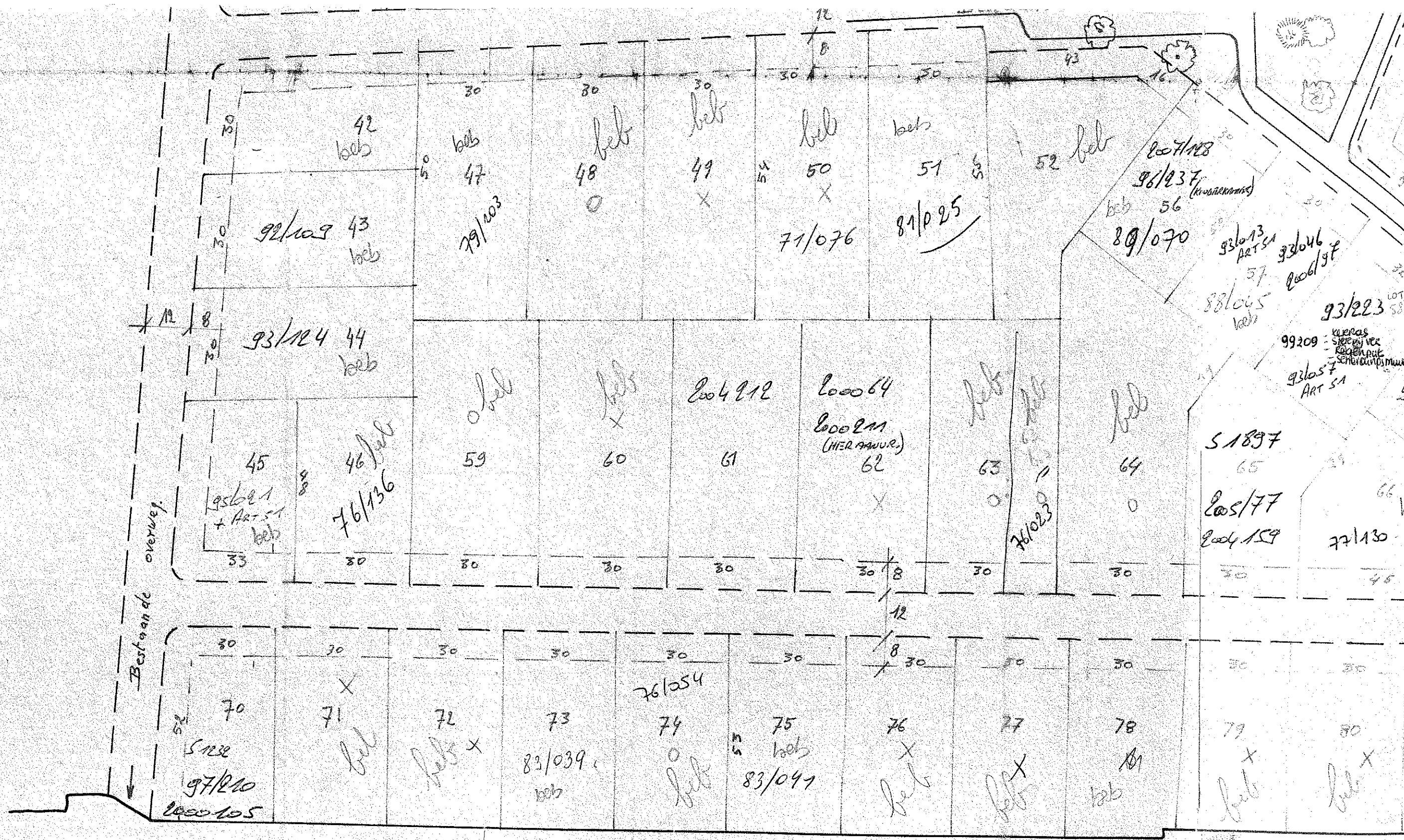
51899

66
S. 1401
18
94/251

97/136
76/126 20 beb

21 beb

Bestaande Weg



Bestaande overweg

42
bets
92/109 43
bets

47
bets
79/103

48
bets

49
bets

50
bets
71/076

51
bets
81/025

52
bets

44
bets
93/124

45
bets
93/121
+ ART SA
76/136

59
bets

60
bets

61
2004212

62
200064
2000211
(HERAANVRE.)

63
bets
76/023

64
bets

65
51897
2005/77
2004159

70
bets
51232
97/1210
2000105

71
bets

72
bets

73
83/039
bets

74
bets
76/054

75
bets
83/041

76
bets

77
bets

78
bets

79
bets

80
bets

2007/128
96/137
bets 56
89/070

93/113
ART SA
88/065
bets

93/046
2006/97

93/223
LOT 58

99209
KORAS
SIEKIJ VEE
KORAS
SCHERENPUSMURE
93/057
ART SA

77/130